



Firmware Update Procedures

Outline for Firmware Update Procedures

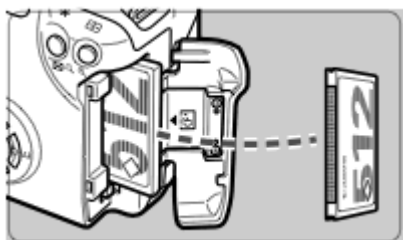
1. Format the CF card used for the firmware update.
Use the camera to format the CF card.
2. Download the firmware update file, and copy the file to the CF card.
Extract the file downloaded from the Web and create the firmware update file.
Copy the firmware update file to a CF card.
3. Insert the CF card into the camera.
4. Turn the camera on.
Use a fully charged dedicated Battery Pack or AC Adapter Kit.
5. From the MENU, select Firmware Ver. X.X.X.
X.X.X indicates the current firmware version for the camera.
Please refer to the user manual for the camera operation.
6. Update the firmware.
Follow the messages displayed on the camera to operate the camera.
7. Turn off the camera.
8. Remove battery from the camera.
Wait at least 2 seconds before reinstalling the battery.

Precaution

- When performing the firmware update operations, do so after **removing the lens from the camera**.
- **A power failure during the firmware writing operation may disable the camera.**
 - Use a fully charged Battery Pack or dedicated AC Adapter Kit (Optional) ACK700 for the firmware update.
 - Do not shut off the power during the firmware writing operation.
 - Do not open the CF card slot cover during the firmware writing operation.
- **Do not press any camera buttons** during the firmware writing operation.

Firmware Update Procedures

- In the following instructions, x.x.x. indicates either the current firmware version or the firmware version for the update.



(1) Format the CF Card

Be sure to carefully review the contents of the CF card before formatting.

Insert the CF card into the camera, and turn on the Main Switch. Press "MENU" button and select the tools "Setup" menu. And then select "FORMAT" and then accept the confirmation to initialize the CF card.

* For firmware update, be sure to use a blank CF card formatted with the camera.

(2) Download the firmware update file from the Web page.

The file for updating the camera's firmware can be downloaded from the Web page. Please download the compressed, self-extracting file that matches your computer's operating system.

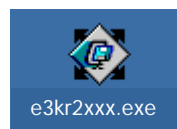
Extract the file downloaded from the Web and create the firmware update file. Copy the firmware update file in the first window that appears when the CF card is opened (the root directory).

The name of the firmware update file is "e3kr2xxx.fir". ("xxx" will be different for each firmware version.)

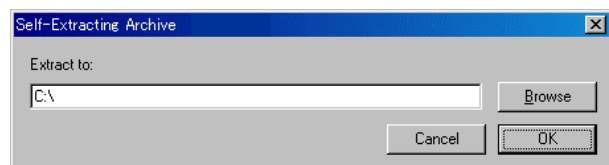
The name and size of the firmware update file can be checked on the Web site.

Windows

Double-click the downloaded file.



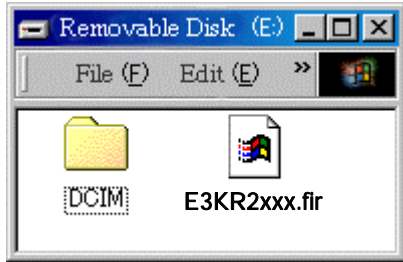
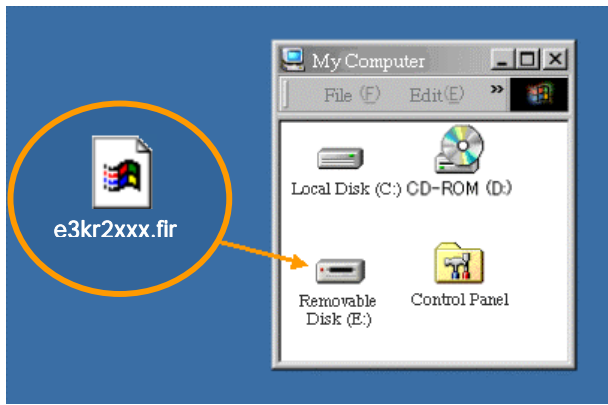
("xxx" will be different for each firmware version.)



Clicking "OK" will cause the file's contents to be extracted and the firmware update file to be created. (Click "Browse" to select a destination for the extracted files. This destination may be different from the path initially displayed, "C: ".)

Confirm file size of the firmware update file. If the file size differs, please download the file again from the Web site.

You can confirm this by right-clicking the icon and selecting the Properties command from the pop-up menu that appears.



Copy the firmware update file via a card reader to a CF card that has been formatted in the Camera.

The drive letter (E:) may be different on your system.

Double-click the CF card icon ["Removable disk (E:)"].

Remove the CF card from the card reader after confirming that the firmware update file has been saved to the card.

*When removing the CF card, be sure to do so as described in the documentation for the computer or the card reader.

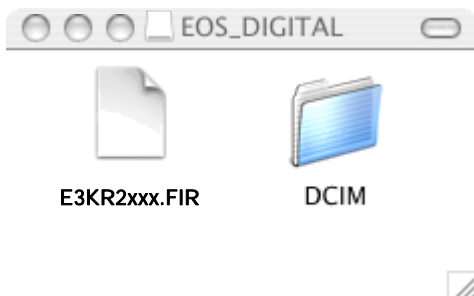
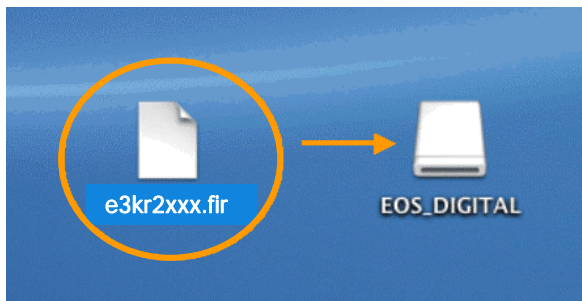
Macintosh

The downloaded file will automatically self-extract, creating the firmware update file.

Confirm the file size of the firmware update file. If the file size differs, please download the file from the Web site again.

To check the file size, select the icon, and then select the Get Info command from the File menu.

Copy the firmware update file via a card reader to a CF card that has been formatted in the camera.

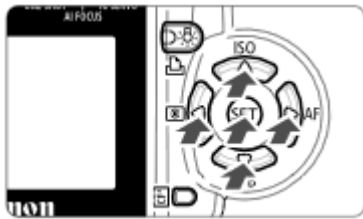
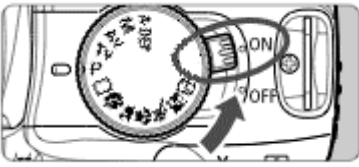
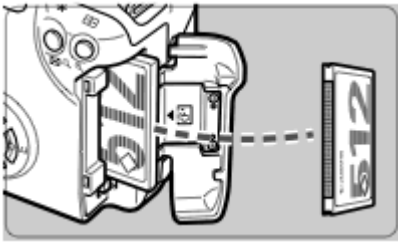


Double-click the CF card icon ["EOS_DIGITAL"].

Remove the CF card from the card reader after confirming that the firmware update file has been saved to the card.

*Before removing the CF card from the card reader, select the EOS_DIGITAL icon, and then choose Eject EOS_DIGITAL from the File menu (or drag the EOS_DIGITAL icon to the Trash).

*Please copy the firmware update file to the root directory of the CF card. If the firmware update file is placed in a subfolder of the CF card, the camera will not see it.



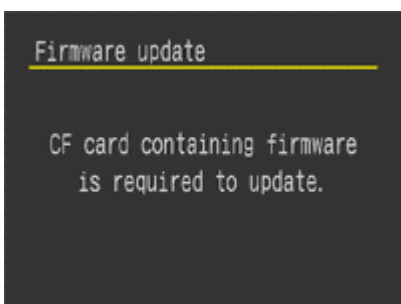
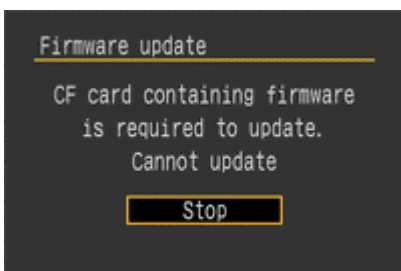
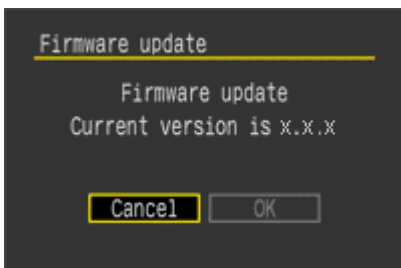
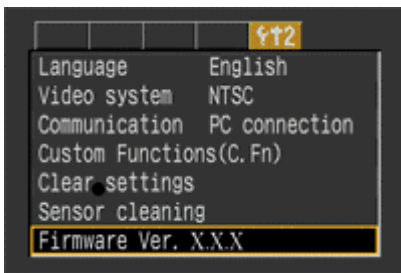
(3) Insert the CF card with the firmware into the camera and turn the Main Switch on.

Rotate the Mode Dial to select <P> mode (or one of the other modes in the creative zone).

Turn the camera ON, and then press the "MENU" button to display the menu.

(4) After selecting "Firmware Ver.x.x.x", press the "SET" button.

Press the Cross Keys to select the "Firmware Ver.x.x.x" item at the bottom of the Set-up 2 menu, and then press the "SET" button.

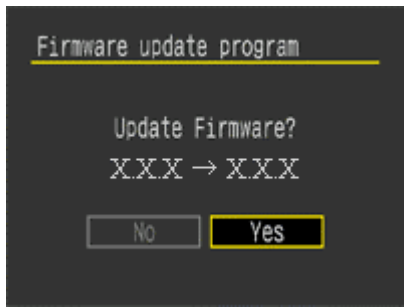


The firmware update screen will appear.

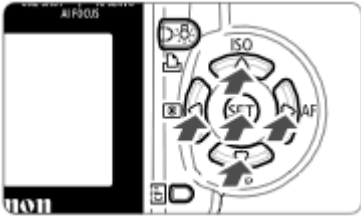
Press the Cross keys, select [OK], and then press the "SET" button.

If the message on the left appears on the LCD monitor, the CF card may not have been inserted or the firmware update file may not have been properly copied to the CF card, so please try again starting from step (1).

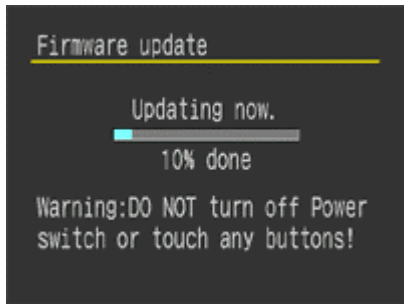
The message on the left will appear on the LCD monitor, and the camera will check the version of its firmware.



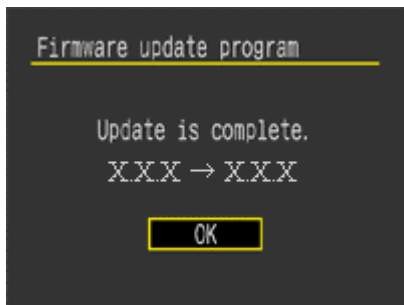
After checking the current firmware, both the current and the new versions will be displayed on the LCD.



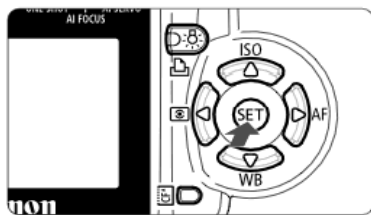
(5) Execute the firmware update after confirming the version to be installed, by selecting [Yes] with Cross Keys and pressing the "SET" button.



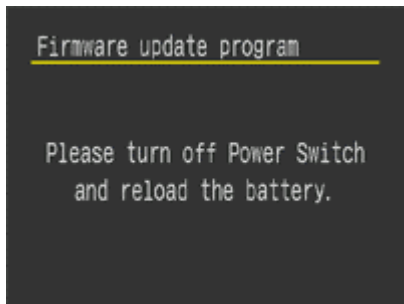
The message on the left will appear during the update.



When the update is completed, the message on the left will appear on the LCD.



(6) Complete the firmware update by pressing the "SET" button.



(7) The message on the left appear on LCD monitor, so please turn the camera OFF.

The firmware update is now completed.

When the firmware update operations are finished, **turn the camera off and remove battery from the camera for at least two seconds.** This will cause the new firmware to take effect after the battery has been reloaded and the camera is turned on.

Format the CF card before using it again.

Verifying the firmware update

Turn the Power Switch ON, and press the MENU button to display the menu. Press the Cross keys and display "Set-up 2 menu", you will see the "Firmware Ver.x.x.x" at the end of the settings, which is the currently installed firmware version number. If the new firmware version appears, the firmware was updated properly.



Note: Select P mode (or one of the other creative modes). The version of the firmware will not appear in the basic modes.

If an ERROR message appears during the firmware update

In case the following message appears during the firmware update, please press the "SET" button and return to the beginning of the procedure. If you still have a problem, please contact the Canon Service Center in your region.

